



A Walk in Faith

St. Peter Church
515 E Knight St
Eaton Rapids, MI 48827-1356

Things to remember about your campaign pledge

Many parishioners have inquired how they will make payments against their capital commitment.

Here are the options we know of that people can use:

- ◆ Set up a reoccurring payment online from your checking or savings account to *St. Peter Church Capital Campaign* to be sent as a check from your bank or financial institution to the church address above. (Note: St. Peter cannot handle direct electronic transfers at this time.)
- ◆ Make regular payments via Credit Card. Just mark the pledge card with CC info, amount, frequency and start date and St. Peter will do the rest.
- ◆ Write a check or a series of checks according to your own plan. A new *A Walk in Faith* envelope will be included in the monthly envelope packets parishioners receive beginning in January. Use this special envelope for a monthly pledge payment. For those who would like to give weekly, extra *A Walk in Faith* envelopes will be available in the Church entrance. Just drop the special envelope into any Sunday collection or to the office and your account will be credited.

Each parishioner determines the frequency of his pledge payment and while the payment schedule is up to you, parishioners are encouraged to begin paying on the pledge beginning with September or October. Remember that the goal of this campaign is to raise the necessary funds within one year. What a wonderful Christmas present that would be in 2014 to present to the Lord our accumulated sacrifices and be able to expand our facilities for his ministry.

Each of us should respond to God's direction and TRUST God by stepping up in faith with a capital commitment. Remember, should your circumstances change, you may adjust your commitment by notifying the parish office.

Jesus said *"Strive first for the kingdom...and all these things will be given to you as well."*

Does that mean that each person who gives will experience financial success in return? The promise of Jesus has nothing to do with winning some kind of divine lottery. Rather, if we all give our **proportionate amount**, there will be enough and in return, God will bless each one according to His plan. If we are disciples in our giving, there will always be enough.



ASK, "God, what is my role as your disciple right now?"

then LISTEN;

then RESPOND.



"COUNT YOUR BLESSINGS"

Final Stewardship Newsletter

September 2013

A Walk in Faith

Dear Church Family:

"And God is able to provide you with every blessing in abundance, so that you may always have enough of everything and may provide in abundance for every good work." II Corinthians 9:8

The heart of the parish is the church where God and humanity are united, where faith is nourished and strengthened and shared with other generations. In addition to being a place where we worship, receive sacraments, pray and sing God's praises, parish ministry programs respond to God's command to love and touch the lives of people both in the parish and the general community.

We, as members of St. Peter Church, collectively make up the Body of Christ. The well-being of this body is the responsibility of each member – a **personal** responsibility of each of us. Christ's blessings come through our actions of sacrifice and selfless giving to others. Our personal service is but one aspect of this giving. Our financial gifts are another. As followers of Christ, we are to use all our gifts to further His work.

As we commit ourselves to Christ through service, prayer and the *A Walk in Faith* campaign, our eyes should be opened to the many blessings that God has given to us. We often find the real surprise is seeing what our blessings truly are. We discover blessings through our family, friends, parish, in our special talents and abilities, and in the opportunities to share Christ and serve others. These blessings will always outweigh the material possessions that surround us.

Remember, September 21 & 22 is Commitment Weekend. During each of the Masses, parishioners will be asked to begin confidentially registering their pledges by completing a pledge card. We are counting on each and every parishioner to do his/her part in making this campaign a success. As you consider your sacrificial pledge to the *A Walk in Faith* capital stewardship campaign and to Christ's work here at St. Peter Church, **count your blessings and give accordingly, as He leads you.**


Fr. Bennett P. Constantine
 Pastor


Donna Fedewa Chris and Kathleen Smith
 Campaign Co-Chairs

A Love Relationship

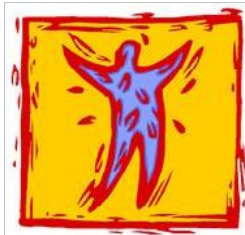
The more we love Him—the stronger the relationship—the more of ourselves (*time, talent, treasure*) we are willing to give. Christian stewardship is about men and women who live a life of ongoing discipleship that involves embracing, cultivating, enjoying, sharing—and sometimes giving up—the goods of human life. This is what all of us are asked to do for the sake of an improved and better faith home.

As the poet James Russell Lowells says,

*"Not what we give, but what we share,
For the gift without the giver is bare;
Who gives himself with his gift feeds three,
Himself, his neighbor, and Me.."*



EXCITEMENT IS BUILDING



A feeling of anticipatory joy is already sensed by the parishioners of St. Peter as we look forward to our special **commitment weekend on September 21/22**. This weekend marks the formal start of the “commitment phase” of our campaign. On this special commitment weekend, we will enjoy food, refreshment and fellowship following each Mass. On this weekend, we are all asked to respond to how the Lord is leading us with our sacrificial capital pledge. Mark your calendars and plan on staying a bit following Mass.

GETTING YOUR PLEDGE CARD

The pledge card with return privacy envelope that will be used in our *A Walk in Faith* campaign will be distributed at each Mass on September 21/22 weekend. Please remember, the pledge card is not a contract, but a simple statement of intent. For our church to know what dollar amounts to expect is very important in our planning the final design and construction of our new parish facilities.

You can include on your pledge cards non-cash gifts in addition to your cash pledge. Non-cash items such as stock, bonds, real estate, etc., are welcome and can enhance cash gifts. When you complete your pledge card, record any non-cash gift and its estimated value. Remember, your pledge should be *over and above* what you give to the annual offertory.

Not Equal Gifts,

but Equal Sacrifice

Continuing ‘His’ work at St. Peter Church

- Features & Benefits -



...in quick review to refresh our minds.

- A classroom for every teacher within one building so that they can instruct our children in an appropriate setting without unnecessary distractions or interruptions or cold
- Double the space for parish events, dinners, wedding receptions...
- A parish hall equipped to show films, host plays and/or spiritual events with guest speakers
- A gathering space large enough for people to gather and converse without blocking others, space for parish displays or signups without disturbing ongoing prayer in church
- Kitchen facilities and related storage that don't require 2-3 hour setup for cooking at large parish events
- Adequate bathroom facilities for church goers and event participants alike
- Extra meeting rooms for DRE, Youth Group, RCIA.... And a larger room for use by the Knights of Columbus.
- Increased general storage space to replace the aging portables

These are not extraneous luxuries, these are basic facilities for the ministry life of the Church.

Sacrificial Capital Pledge

Over and above annual stewardship (offertory)

Q. What does "sacrificial" mean?

A. It means your life should change while fulfilling the pledge. It involves a re-prioritization of how you use your God-given resources. It may mean "giving-up" something" (at least temporarily). It could mean forgoing a vacation, or night out once a month, or taking your lunch to work once a week, or giving up Caffè Latte or Cappuccino for a month. After prayerful thought about your blessings and the size of your pledge, when you do not find yourself making excuses for its size, when you know in your heart that you have been completely honest with God and yourself, then your pledge is the proper size.

# of Gifts Needed	Possible Payment Options			Total 1-year Gift	Cumulative Total
	Weekly(52)	Monthly(12)	Annual(1)		
Tier 1					
22	\$962	\$4,167	\$50,000	\$50,000	\$1,100,000
8	\$673	\$2,917	\$35,000	\$35,000	\$1,380,000
3	\$481	\$2,083	\$25,000	\$25,000	\$1,455,000
Tier 2					
15	\$192	\$833	\$10,000	\$10,000	\$1,605,000
24	\$135	\$583	\$7,000	\$7,000	\$1,773,000
40	\$115	\$500	\$6,000	\$6,000	\$2,013,000
50	\$96	\$417	\$5,000	\$5,000	\$2,263,000
Tier 3					
55	\$88	\$250	\$3,000	\$3,000	\$2,428,000
30	\$38	\$167	\$2,000	\$2,000	\$2,488,000
10	\$19	\$83	\$1,000	\$1,000	\$2,498,000
Remainder	\$10 or less	\$42 or less	\$500 or less	\$500 or less	\$2,500,000

WHAT IS YOUR PART ?

Each of us are asked to give sacrificially. But, what does that mean?

First of all, sacrificial giving is rooted in worship. At the heart of worship is the desire to meaningfully and more fully give ourselves to God.

Second, sacrificial giving, the kind of worship that genuinely honors God, costs us something. Giving is a meaningful commitment, not some good or easy deal which cheapens our relationship with God. Sacrificial giving is committing ourselves in ways that make a real difference in shaping our lives, our priorities, our calling, and our witness.

Making a sacrificial pledge is about making a decision of faith that makes a real difference in shaping our lives in Christ. When people make equally committed decisions of faith, those decisions eventually translate into a wide range of financial gifts. All such meaningfully committed gifts are important and significant, regardless of their respective financial sizes.

How do you make a decision about your sacrificial gift? Like any decision of faith, your decision needs time for prayer, conversation, questions, searching, reflection, discernment, and committed action. Ask yourself:

- Lord, what would You do through me?
- What resources am I blessed with?
- Does my commitment decision actually make any real difference to me? Does it reshape my life?
- Is my decision affecting me and deepening my discipleship?
- Does my commitment honor and worship God?



In a wealthy, self-interested, consumer society, there are so many things that claim our lives. The “things” in life and the latest and greatest luxuries become necessities in such a short time. Things like personal computers, cars, the internet, TV's, cell phones, and their endless list of peripheral devices. Jesus reminds us that a person cannot serve two masters. As we respond to *A Walk in Faith* capital stewardship campaign, may God be glorified in our spiritual worship and the tangible gifts that we all joyfully offer, and may each of us grow in Christ.

As faithful stewards, we must consider the many gifts God has given us and communicate with God through prayer and *listen* to what He would have us do in His name. We will not be found trustworthy for doing *our* will, and we will not know *His* will without prayer.